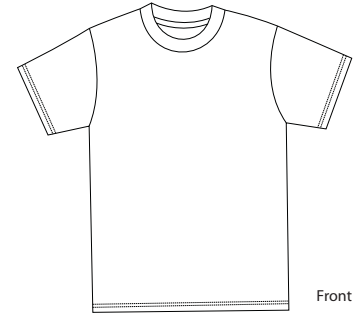
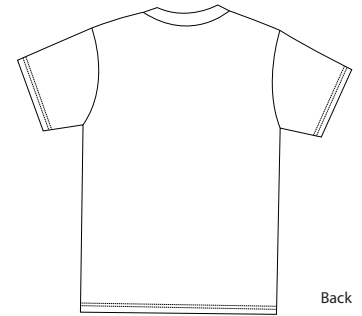


100% Cotton Essential T-Shirt

PORT & COMPANY®



Front



Back

PC61

- * 6.1-ounce 100% cotton * Taped shoulder to shoulder * Coverseamed neck
- * Double-needle hem

Care Instructions:
Machine wash cold, inside out, with like colors. Only non-chlorine bleach when needed. Tumble dry medium. Medium-hot iron. Do not iron decoration.

Finished Measurements in Inches

| Size | S | M | L | XL | 2XL | 3XL | 4XL | 5XL | 6XL |
|--------|------|------|------|------|------|------|------|-------|-------|
| Neck | 6.75 | 6.75 | 7.25 | 7.25 | 7.75 | 7.75 | 7.75 | 8.125 | 8.125 |
| Width | 18 | 20 | 22 | 24 | 26 | 28 | 30 | 32 | 35 |
| Length | 27 | 29 | 30 | 31 | 33 | 34 | 35 | 36 | 37 |
| Sleeve | 7.5 | 8 | 8.5 | 9 | 9.5 | 10 | 10.5 | 11 | 10 |

Neck measured from seam to seam. Chest width measured 1" below arm hole. Body length measured from back neck seam to hem. Sleeve length measured from shoulder.

Color Chart

| Colors | Aquatic Blue | Ash | Athletic Heather | Athletic Maroon | Black | Brown | Cardinal | Charcoal |
|--------|---------------|-----------------|------------------|-----------------|-------------------|----------------------|-------------------|-------------|
| PMS | 298 C | No Match | No Match | 229 C | Process Black | 7519 C | 208 C | 431 C |
| Colors | Colonial Blue | Daffodil Yellow | Dark Green | Gold | Kelly | Light Blue | Lime | Natural |
| PMS | 646 C | 134 C | 5535 C | 137 C | 340 C | 543 C | 367 C | 4685 C |
| Colors | Navy | Olive | Orange | Orange Sherbet | Pale Pink | Purple | Red | Royal |
| PMS | 296 C | No Match | 172 C | 1575 C | 670 C | 273 C | 200 C | 661 C |
| Colors | Sand | Sangria | Spruce | Steel Blue | Stone-washed Blue | Stone-washed Green | Violet | White |
| PMS | No Match | 227 C | No Match | 7546 C | 5414 C | 414 C | 7456 C | No Match |
| Colors | Yellow | Candy Pink | Carolina Blue | Chamois Yellow | Ultramarine Blue | Dark Chocolate Brown | Dark Heather Grey | Deep Marine |
| PMS | 127 C | 189 C | 659 C | 131 C | 7452 C | 476 C | 425 C | 654 C |
| Colors | Dill Green | Dusty Brown | Fiery Red | Forest Green | Jade Green | Charcoal | Light Sand | Rich Red |
| PMS | No Match | No Match | 1795 C | 627 C | 569 C | ClGy 11 C | 7534 C | 201 C |
| Colors | Lemon Yellow | Pistachio | Medium Grey | Texas Orange | Turquoise | | | |
| PMS | 123 C | 7494 C | 7539 C | 1675 C | 7461 C | | | |

Colors

| | |
|-------------------|-----------------|
| White | Athletic Maroon |
| Lights | Brown |
| Aquatic Blue | Cardinal |
| Ash** | Charcoal |
| Daffodil Yellow | Colonial Blue |
| Light Blue | Dark Green |
| Lime | Gold |
| Natural | Kelly |
| Orange Sherbet | Navy |
| Pale Pink | Olive |
| Sand | Orange |
| Stonewashed Blue | Purple |
| Stonewashed Green | Red |
| Violet | Royal |
| Yellow | Sangria |
| Darks | Spruce |
| Athletic Heather* | Steel Blue |

Please Note:

Colors shown are approximate and for reference only. For closest match see PMS colors, or for exact match, returnable samples and grommeted samples are available.

*90/10 Cotton/Polly

**99/1 Cotton/Polly